



A different postcard from Marseille

Ready to start the journey you'll never blot out? *Bienvenue* to **nhow Marseille!**

Located in one of the Mediterranean's most beautiful bays, nhow Marseille gives you **brehtaking panorama** over the **Calanques** and the **Château d'If**. Hidden from street view and built into the rocks, it's your access to and your escape from the city.

This hotel boasts a wonderful setting for a **relaxing holiday** but is also one of the **largest meeting and event venues in Marseille**: close to the Palais des Congrès, the Velodrome Stadium and the Chanot Exhibition Park, it's a few steps away from beautiful beaches and places where you can enjoy jogging, golfing and sailing.

Full of artworks and unconventional spaces that blend the **Canaille touch** of the city with inspirations coming from a **postcard of the French Riviera**, nhow Marseille will amaze you: straight to the heart like love at first sight, teasing your mind like a never-ending obsession.

nhow Marseille, *Canaille* attitude

Put your sunglasses on and relax dabbling your feet in the water: you cannot even imagine what nhow Marseille has to offer!

Beach umbrellas over your head, endless **terraces, gym and spa**; a few steps will lead you to a **natural water spring** that feeds the beautiful **swimming pool** on the ground floor.

Once you have set foot here, expect the unexpected: the **convention lobby** looks like an aquarium, fishes swim inside the **meeting rooms**. **Cacti** will prick you in the yellow **Bar, soaps** bewitch in the blue one.

Is this not enough? What about saying that design belongs to Claire Fatosme & Christian Lefèvre, in collaboration with Teresa Sapey? Internationally renowned interior designers

and architects, they remarkably combined creativity, functionality and art, shaping hotel's spaces with emotions and interpreting its *Canaille* DNA.

Unordinary rooms

4 stars and 150 rooms with terraces overlooking the sea: graffiti on the walls, blue and yellow brush strokes all around.

Wanna coffee? Make it! Need a chat? Connect to free Wi-Fi! Forget standard room facilities, you'll be surprised here. You won't find ordinary mattresses or floppy pillows but super-comfy beds where you can forget your nightmares. You won't sing melodic songs in the shower, but you'll rap in the middle of your bedroom!

So, have fun in the inspiring **130 nhow rooms**, broaden your horizons in **5 Superior rooms**, let **14 Suites** leave you gobsmacked and awaken your senses in the amazing **nhow Suite**...

In your desire to discover nhow Marseille you are spoiled for choice!

Unconventional services

Have you ever been in a **Cactus Bar**? nhow Marseille has got one! Located on the ground floor, it shines with its brightness: yellow cacti surround you while you're drinking cocktails, relaxing, chatting and laughing... Cheers!

Have you ever had a **Savon Experience**? This hotel has got it too! Dream about enchanting scents and colored soaps, imagine sipping your favorite drink in a dreamlike atmosphere. Wake up, your dream will come true in the **Savon Bar**.

Swimsuit, bath towel and flip-flops: ready to live your best-ever relaxation time? Dive into the **250sqm outdoor swimming pool** and feel like a '60s diva: put on your giant black sunglasses and a striped Pamela hat while a fresh cocktail is ready to meet you.



Outstanding sea views included!

If this is not enough for your hungry imagination, the ultimate gourmet journey is just around the corner. Enjoy the **Restaurant** to savor the best farm-to-table cuisine your taste buds have ever tried while looking at the sea. *Bon appetit!*

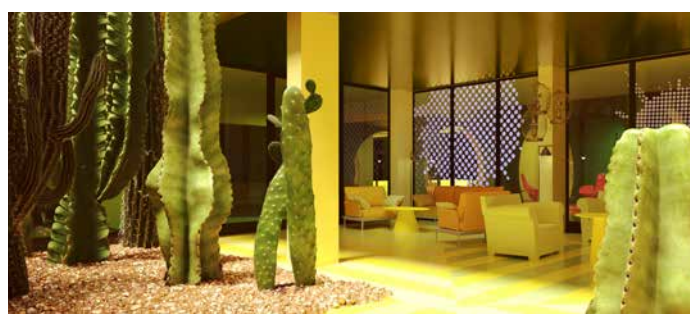
Inspiring Meetings & Events

Create your event or meeting in one of the **14 meeting rooms**: seven featuring sea views, the Auditorium seats **322 people**.

State-of-the-art technologically, spacious and modular, they're the ultimate location for any kind of occasion, from **business appointments** to **weddings & parties**.

FUNCTION ROOMS AND CAPACITIES

Name	Height	Area	Dinner	Square	Cocktail	Class	Theatre	U shape	Cabaret	Natural light
Amphithéâtre	5 m	360 m2	-	-	-	-	322	-	-	NO
Borély	2.86 m	400 m2	300	-	500	150	300	-	150	YES
Borély 3	2.86 m	105 m2	-	-	-	60	90	-	42	NO
Borély 5	2.86 m	60 m2	40	25	45	25	50	25	28	YES
Borély 6	2.86 m	60 m2	40	25	45	25	50	25	28	YES
Borély 7	2.86 m	175 m2	120	-	200	120	150	45	84	YES
Borély 3+7	2.86 m	280 m2	120	-	200	180	240	45	126	YES
Borély 3+5+7	2.86 m	340 m2	160	-	245	205	290	70	154	YES
Borély 5+7	2.86 m	235 m2	160	-	245	145	200	70	112	YES
Borély 6+7	2.86 m	235 m2	160	-	245	145	200	70	112	YES
Borély 5+6+7	2.86 m	295 m2	200	-	290	170	250	95	140	YES
Terrasses Borély	-	430 m2	300	-	400	-	-	-	-	YES
Provence	2.5 m	50 m2	-	24	30	25	35	20	-	YES
Planier	2.5 m	40 m2	-	18	-	-	-	-	-	YES
Panoramique	4 m	45 m2	-	15	-	-	-	-	-	YES
Envau	2.5 m	18 m2	-	8	-	-	10	-	-	YES
Riou (1)	2.45 m	18 m2	-	8	-	-	10	-	-	NO
Degaby (2)	2.45 m	18 m2	-	8	-	-	10	-	-	NO
Maïre (3)	2.45 m	18 m2	-	8	-	-	10	-	-	NO
Jarre (4)	2.45 m	18 m2	-	8	-	-	10	-	-	NO
Morgiou	2.45 m	18 m2	-	8	-	-	10	-	-	NO
Riou+Degaby (1+2)	2.45 m	36 m2	-	20	-	15	20	15	-	NO
Riou+Degaby+Maïre (1+2+3)	2.45 m	54 m2	-	30	-	25	35	20	-	NO
Jarre+Maïre+Degaby (2+3+4)	2.45 m	54 m2	-	30	-	25	35	20	-	NO
Montecristo (1+2+3+4)	2.45 m	72 m2	-	-	-	40	50	30	-	NO



Marseille Provence Airport: 30 km/35 min;
 Saint-Charles railway station: 8.3 km/20 min;
 Rond-point du Prado metro station: 3.5 km/8 min.

200 Corniche Président John Fitzgerald Kennedy
 13007 Marseille, France
 M. a.zarpellon@nh-hotels.com
 nhow-hotels.com

